

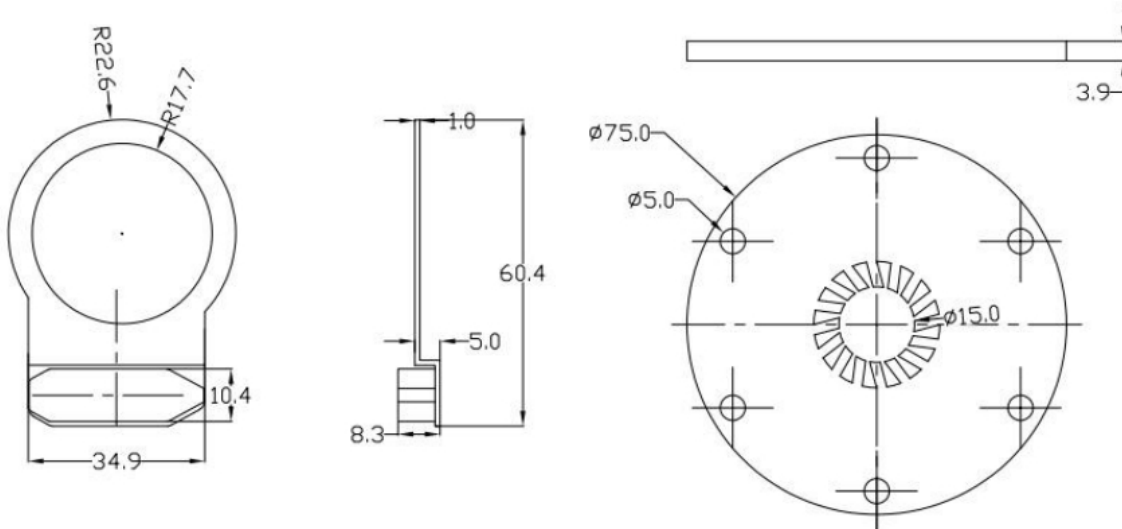
SM-05 PAS Sensor

1. Function overview

The sensor, mounted on both sides of the electric bike, has two built-in high-sensitivity Hall components, which can detect the assist signal in real time through the chip processor. Compared with other sensors, It is equipped with 6 magnetic steels and can provide 12 pulse signal/ revolutions, higher accuracy, more smooth assist effect, convenient installation and disassembly, beautiful and novel appearance.

When the pedal turns forward, the sensor outputs a pulse signal. When the pedal is turned backward, the sensor outputs only low potential (no pulse signal at all).

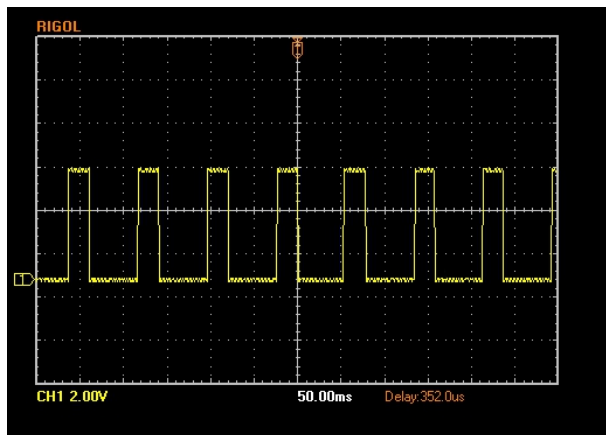
2. Product dimensions



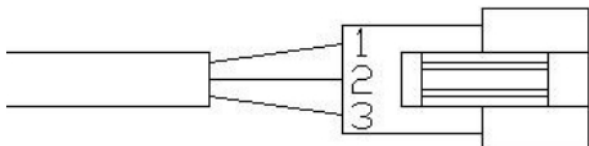
3. Specifications

- Working voltage: 4.5-6V(DC)
- Quiescent current: $< 5\text{mA}$
- Maximum working current: $< 6\text{mA}$
- Number of pulses: 12
- Wire tension: $> 20\text{N}$
- Hall response time: $< 0.001\text{s}$
- Waterproof grade: IP65
- Material: ABS

4. Output waveform



5. Wiring Sequence definition



1	Blue	Assist signal
2	Red	+5V
3	Yellow	GND

6. Product picture

